

SV Conversion Kit

#SV-CK-3

Installation Manual



DANGER

When installing this water heater in an area with a large amount of lint such as a commercial Laundromat, direct-vent ("DV") system must be used. The "-SV" configuration (using an SV conversion kit) is prohibited.

WARNING

Requests to Installers

Read this installation manual carefully, and follow the installation instructions. Do not use this kit unless the water heater packaging is marked with "SV Convertible".

WARNING

Use of this kit converts the water heater to non-direct vent (SV) operation. Failure to perform the below steps could result in a fire or explosion causing property damage, personal injury or death, which are not covered by the warranty.

※Refer to the Installation Manual provided with the water heater for additional details on completing the installation.

■Included Accessories

Check for any missing items before starting the installation

Part No.	Part	Qty
①	90° Elbow (with Inlet Screen)	1
②	Installation Manual Check List (this document)	1

■Installation Checklist

Be sure to check the following items after installation

Item	Ref. No.	Description	Check
Air Intake	1	Are the 90° elbow and Inlet Screen properly attached?	
	1	Is a clearance of 6" (152mm) maintained from the Inlet Screen?	
	2	Is there a sufficient combustion air supply?	
Dip Switch	2	Ensure that Dip switch No.3 is ON.	
		※Only No.3 is used for SV conversion. For other switches, refer to the Installation Manual provided with the water heater.	

■Note to the installer

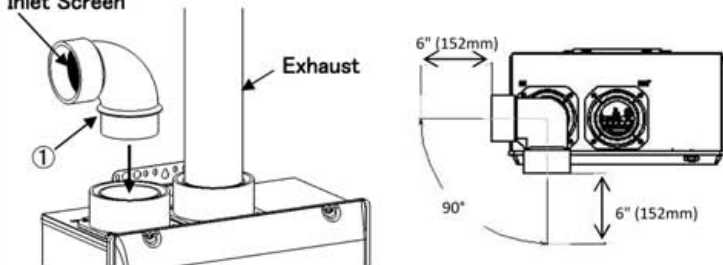
Notify the customer that periodical checking and cleaning of the Inlet Screen will be required to clean off any accumulated dust/debris with a vacuum cleaner or damp towel. A clogged Inlet Screen will cause incomplete combustion to occur.

■ Installation

<Air Intake>

1. Attach Elbow ① to the air inlet using PVC glue.
 - The following drawing shows the Elbow orientation options (front or side).
 - Secure a clearance of 6" (152mm) or more in front of the Inlet Screen.

Inlet Screen

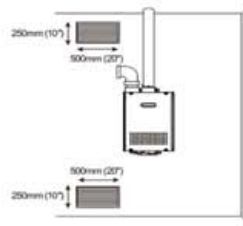


※Do not add additional vent lengths to the air intake elbow.

※Avoid installation near a washer/dryer. Lint/dust from the washer/dryer can clog the Inlet Screen causing incomplete combustion to occur.

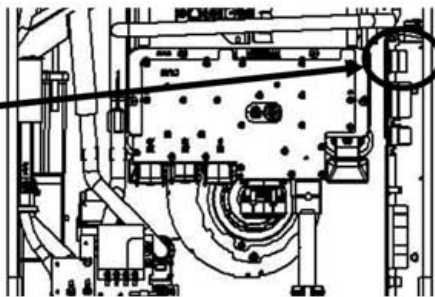
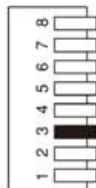
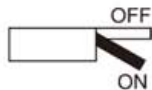
2. Provide combustion air supply openings

- Provide two permanent openings to allow circulation of combustion air.
- Make each opening 199 square inches if they provide indoor air, and 100 square inches if they provide outdoor air.
- For details, refer to the Installation Manual provided with the water heater.



<Dip Switch>

1. Disconnect power to the water heater.
2. Turn ON dip switch No.3*.



*EX) For model NRC98-DV

NOTE: Failure to disconnect power will result in a "73" or "733" code displayed on the remote controller and a cease in operation. If this occurs, disconnect, then reconnect power to the water heater to reset the system.